

SPECIFICATIONS

Tact Switch

Electrical

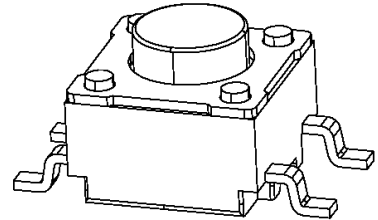
Rating: 50mA max.
Contact Resistance: 100m max.
Insulation Resistance: 100M min.
Dielectric Withstanding Voltage: 250V AC for 1 Minute
Bounce: 5ms max.

**Tact Switch, L SMT Type,
W/O Ground**

Mechanical

Operating Force & Durability: 100±30gf 1000000 Cycles
160±50gf 1000000 Cycles
260±80gf 100000 Cycles

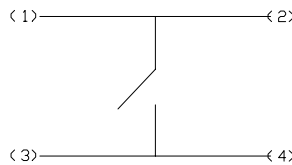
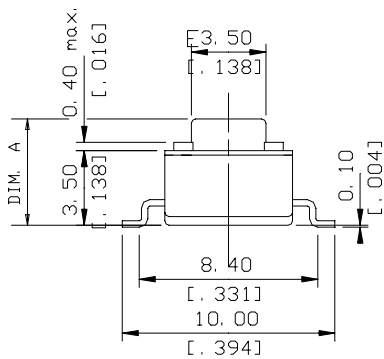
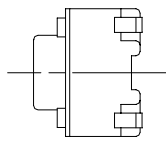
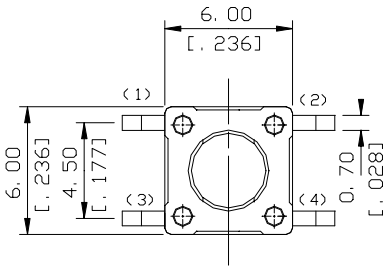
Travel: 0.25+0.2/-0.1mm
Return Force: 25gf min.



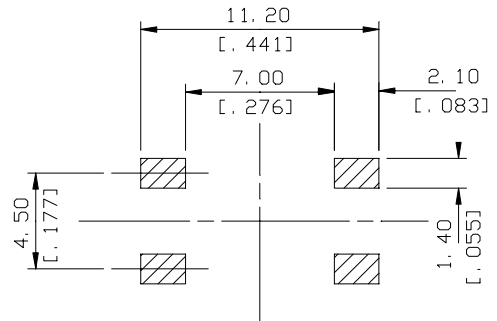
Physical

Operating Temperature: -20 to +70

DRAWING



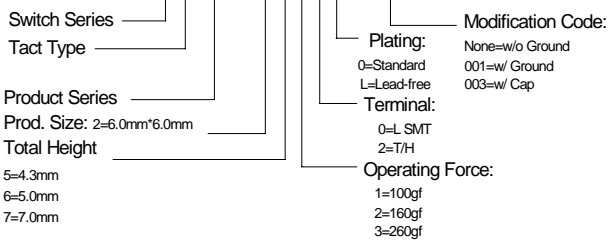
CIRCUIT SCHEMATIC



RECOMMENDED P. C. B. LAYOUT

ORDERING INFORMATION

PRODUCT NO.: 1BT003-2****-***



1BT003-2420L(-003)	160±50gf	9.5
1BT003-2510*	100±30gf	4.3
1BT003-2520*	160±50gf	4.3
1BT003-2530*	260±80gf	4.3
1BT003-2610*	100±30gf	5.0
1BT003-2620*	160±50gf	5.0
1BT003-2630*	260±80gf	5.0
1BT003-2710*	100±30gf	7.0
1BT003-2720*	160±50gf	7.0
1BT003-2730*	260±80gf	7.0
1BT003-2820*	160±50gf	13.0
1BT003-2920*	160±50gf	17.0
P/N	OPERATING FORCE	DIM. A